

# Uniden®

## **iGO CAM 80** **Accident CAM** **Vehicle Recorder**

---

For more exciting new products please visit our website:  
Australia: [www.uniden.com.au](http://www.uniden.com.au)

---

# OWNER'S MANUAL

# Important Safety Instructions

---



**NOTE**

Uniden does not represent this product to be waterproof. Do not expose this product to Rain or Moisture.



**NOTE**

This product is intended for use in a motor vehicle. Don't install the device where it will block the driver's view of the road (including the mirrors!) or the deployment of the airbag.



**NOTE**

**Keep your attention on the road!** Don't try to operate or focus on any device while driving. If you have to concentrate on a device, pull off the road for a few minutes.



**NOTE**

Ensure that the camera lens is kept clean and there is nothing blocking the lens.



**NOTE**

Don't leave the device in direct sunlight for a long period of time or where the temperature could go above 60°C.



**NOTE**

You should examine, check and/or verify the device at least once a month including the associated SD card, to ensure the recording are working properly.



**NOTE**

Never attempt to disassemble, repair or make any modifications to your device.

# Contents

---

<b>Important Safety Instructions .....</b>	<b>2</b>
<b>What Do I Do First? .....</b>	<b>4</b>
Make Sure These Items Arrived in the Box .....	4
<b>Controls &amp; Indicators .....</b>	<b>5</b>
<b>How Do I Put It in My Car? .....</b>	<b>7</b>
Attaching the Windshield Mount .....	7
<b>Operation .....</b>	<b>8</b>
Micro SD Card .....	8
Plug it in, Power On/Off .....	9
Record Mode .....	10
Photo Mode .....	14
Playback Mode .....	14
Connecting to a PC .....	15
iGO CAM Player .....	15
Special Features .....	17
Important Information .....	19
<b>Warranty .....</b>	<b>20</b>

# What's In The Box

---

## Make Sure These Items Arrived in the Box



**iGO CAM 80**



**DC Car Adaptor**



**3M stickers**

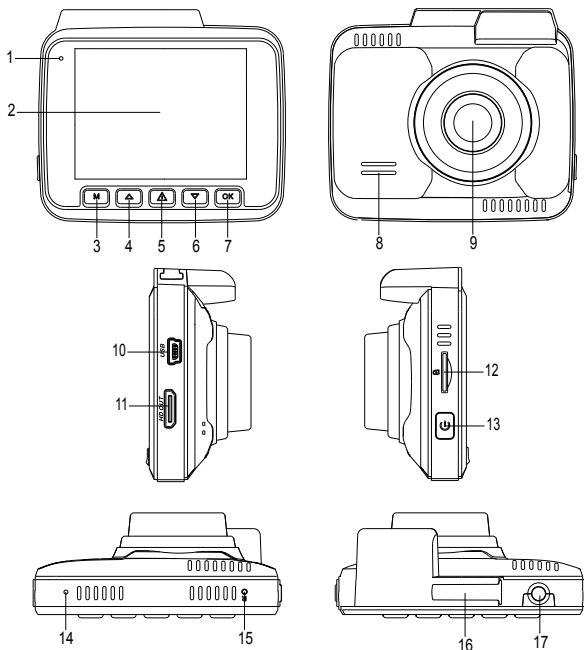


**Mini USB data cable**

- **3M Sticker Mount Bracket**
- **Owner's Manual**

- If any item is missing or damaged, contact your place of purchase immediately. ***Never use damaged products!***
- Need help? Get answers at our website: ***www.uniden.com.au*** for Australian model.

# Controls & Indicators



Ref	Component	Description
1	<b>LED</b>	Glows red when the device is recording. Glows green when charging.
2	<b>LCD Screen</b>	
3	<b>MENU/ MODE</b>	Press to open the Record/Photo/Playback Menu, General Settings Menu. Press and hold to switch between various modes - Record, Photo and Playback.

4	<b>UP ▲</b>	Press to zoom inwards in record and photo mode. In Menu list, move the cursor, one line up. Press and hold to turn on/off audio recording.
5	<b>Emergency</b>	Press to lock the current recording file. Press and hold to turn on/off WiFi hotspot.
6	<b>DOWN ▼</b>	Press to zoom outwards in record and photo mode. In Menu list, move the cursor, one line down. Press and hold to turn on/off park mode in record mode.
7	<b>OK</b>	Record Mode: Press to start or stop video recording. Playback Mode: Press to take a snapshot. Playback Mode: Play/Pause/Resume. Press to confirm a selection in the Menu. Press to confirm a change in the settings.
8	<b>Speaker</b>	
9	<b>Camera Lens</b>	
10	<b>Mini USB Port</b>	Connect to mini USB cable & charge battery. Connect to PC for data (SD card) transfer.
11	<b>HDMI Port</b>	HDMI output. Connect using an HDMI cable to a TV to view video/photo (not included).
12	<b>Micro SD Card Slot</b>	Insert micro SD Card (up to 64GB min class 10).
13	<b>Power</b>	Press & hold for 2 seconds to turn power on. Press & hold for 3 seconds to turn power off.
14	<b>MIC</b>	Records sound.
15	<b>Reset</b>	If the device fails to operate properly, try resetting the device. Press the reset button by using a fine pen or paperclip.
16	<b>Bracket Slot</b>	Slot in the sticker mount bracket.
17	<b>AV In</b>	Connect to the Reverse Camera (Optional).

# Installation

---

## Location

To have a better view, try to install at the center of the windshield. Make sure the lens is located in a place where the windshield wiper can clean the window to ensure view is clear.

Make sure the device is not installed in a place where it will interfere with the safety bag. Make sure the GPS will not be obstructed by the windshield's sun control film (window tint).

## Installing the Mount onto the Windshield

1. Slide the sticker mount bracket into the device bracket slot and make sure it fits tightly.
2. Clean the area you desire to have the dash cam placed before sticking the device.
3. Peel off the sticker protective film from the 3M sticker
4. Press and apply force on the mount onto the windshield behind the rear-view mirror.
5. Adjust the viewing angle of the camera by loosening the screw of the bracket and fasten it back to secure the viewing angle. We recommend the camera should point slightly downwards  $\sim 10^\circ$  below eye level.

## GPS Reception information

Surrounded with tall buildings, in a tunnel or poor weather conditions may result in poor GPS reception or even lose GPS signal. Over-tinting or a rain sensor on the windshield can affect GPS reception.

If the signal is unstable even when you are driving, please try changing the installation spot of your dash camera. For the first time use, it takes about 15~20 minutes to get GPS signal, and after that, it normally takes about 3 minutes.



**NOTE**

Sticker mount is difficult to remove after it is installed and will not stick well on a curved/textured or wet surface.



**NOTE**

Do not install the product in a location where it can obstruct the driver's field of vision.

# Operation

## Micro SD Card



### NOTE

A compatible micro SD card (not supplied) has to be inserted before you start using the unit. Ensure that the unit is turned off before inserting or removing the micro SD card.

The device can support micro SDHC cards (High Capacity SD) up to 64GB in capacity. A micro SDHC card of at least 8GB capacity and minimum speed of Class 10 is recommended.

Insert a formatted micro SD card gently in the slot at the side of the unit. To remove the card from the slot, press the edge of the micro SD card inwards for it to pop out and then pull it out of the slot.

It is important to format the micro SD card before using it, so as to avoid any damage to the files created on iGO CAM 80.

Uniden only recommends using good quality MLC/SLC micro SD cards. Please ensure that the SD card used is rated for Dash Cam use.

## Video Storage Capacity

Refer to the table below for the recording capacity for different card capacity and some of the recording resolution.

Resolution	8GB	16GB	32GB	64GB
2880x2160P 24	45 mins	90 mins	180 mins	360 mins
1920x1080P 60	55 mins	110 mins	220 mins	440 mins
1280x720P 60	90 mins	180 mins	360 mins	720 mins

## Battery Information

The iGOCAM 80 has an in-built battery of 250mAh capacity. The device is designed mainly for in-vehicle use, drawing on vehicle power and the duration of portable use is limited by the settings and the battery operating time.

The device will charge the battery whenever power is detected through the USB port. The device will take about 120 minutes to charge completely.



### NOTE

Please ensure that the battery is fully charged before using it for the first time. To extend the battery life, fully charge the device once every 3 months. The battery life will degrade over a period of time especially when the device is exposed to high temperature.



# Power On



## NOTE

When connected to a car charger with power, the device will automatically power on and start recording.

1. Connect the DC car adaptor to the power connector USB port found on the device.
2. Connect the other end of the DC car adaptor to your car's cigarette lighter.
3. The device will power on automatically when the car supplies the power to the device.
4. The red dot on the screen will start flashing and recording starts automatically.

At other times, press and hold the power button for at least 2 seconds.



## NOTE

Be sure insert the SD card before powering up the device. Format the SD card before you start recording for the first time.



## NOTE

The GPS icon flashes red when the unit hasn't detected the GPS signal on the screen. The GPS icon stay solid blue when the unit has detected the GPS signal.

# Power Off

When the car's engine is turned off, the device will automatically turn off in a few seconds.

At other times, press and hold the power button for at least 3 seconds to turn off the device. Do not eject the SD card immediately to prevent damage to the last recorded file.

If you wish to switch the device back on, press and hold the power button for at least 3 seconds.



## NOTE

Only use the DC car adaptor that comes with your device. Any other adaptor might damage the device.

# Record Mode



## NOTE

To record a video, ensure that a valid micro SD card (not supplied) is inserted in the given slot. Also note, that inserting/removing the SD card when the device is recording causes the device to shutdown and in worst case malfunction.

Using the iGO CAM 80 you can record videos and take photos. To record videos, you need to ensure that the unit is in the Record mode.

Press and hold the MODE button to switch between Record, Photo and Playback modes.

## Recording

When connected to a car charger with power, the unit automatically goes into the record mode and starts recording.

A flashing red dot icon and a recording timer indicates that the device is recording. To stop recording, press OK and the red dot disappears, indicating that the recording has stopped.

### Protect the Current Recording

While recording, if you want to protect the current recordings, then press the EMERGENCY button, the lock icon will appear on the screen. This indicates that those recordings have been locked and will not be overwritten by new video clips.

This also applies when the or when the G-Sensor registers an impact while recording.

### Rear Camera (Optional)

Rear Camera helps you capture rear footages. Insert the Rear camera plug into the AV IN port. The footage from the rear camera should now be visible on the screen.

## Record Menu Settings



### NOTE

Please note, you cannot access the Menu Settings while the device is recording. To access the Menu settings, you will need to stop recording by pressing OK.

Press MENU button to open the Record Menu Settings. Press MENU again to open the General Settings Menu. Press MENU once more to exit from the Menu settings.

Press the relevant UP and DOWN keys to scan through the options, under each menu setting. Press OK to select the required option.

<i>In the Record mode, press MENU to open the Record Menu.</i>	
<b>Setting</b>	<b>Description</b>
Video Resolution	Set the recording resolution. The options available are, 2880x2160P 24, 1920x1080P 60, 1920x1080P 30, 1280x720P 120, 1280x720P 60, 1280x720P 30 and FHD P30+VGA P30. Higher resolutions will give you a sharper image, but take up more memory on the card.
Image Quality	Choose between the options - Super Fine, Fine, Normal - to define the detail in the recordings.
Loop Recording	Use this option to set the length of each video clip. If you choose the option 'Off' then the recorder will not loop record and the files will not be overwritten on the micro SD card.
Audio Recording	Use this setting to enable or disable audio recording.
Date Stamp	Opt to have the date and time displayed on the recordings.
GPS Stamp	Opt to have the GPS coordinates displayed on the recordings.
Exposure	Set the brightness sensitivity for better effect in different lighting condition.

Anti-Flicker	Change depending on the electrical power frequency in your area (Default setting is 50Hz and you may not have to change this setting).
Camera Alert	Set the alerts distance when there is a fixed Speed/ Red Light/Red Light-Speed or Average Speed Camera.
Overspeed Alert	Enable this option to receive alerts when over the selected speed limit.
Motion Detection	Enable this setting to allow the unit to record only when it detects movement.
Park Mode	When the car engine and the unit is turned off, this mode enables the unit to turn back ON automatically and create a 30sec locked recording when G-Sensor picks up vibration. Unit must have sufficient battery power remaining in order to record. The G-Sensor must also be turned on.
WDR	Turn on/off the Wide Dynamic Range (WDR) feature to improves the overall exposure throughout your entire image.
G Sensor	This functions helps protect/lock video files in case of a sudden movement/collision. You can change the sensitivity level of the G-sensor.
Viewing Mode	Choose to either have Live view or the speedometer displayed on the LCD.

## General Settings Menu

Depending on the mode, press MENU to open the Record/Photo/Playback Menu. Press MENU again to open General Settings Menu.

Please Note: Settings Menu is common to all the 3 modes.


Setting	Description
WiFi	Turn on the WiFi hotspot for the App data transfer or viewing. To turn the WiFi hotspot off, press and hold the emergency button for at least 2 seconds.
Date & Time	Change the date, time and format by using the relevant UP and DOWN keys, and then press OK to confirm and move on to the next set. Press MENU to return to the General Settings list.
Time Zone	Set the correct time zone for the GPS to get the correct time settings for the device.
Daylight Saving	Enable or disable daylight saving time.
Car Plate Stamp	Edit the car plate stamp. Use the UP/DOWN keys to select a number or an alphabet and press MENU to confirm and move to the next character.
Auto Power Off	Set the time duration to automatically power off the device when powered by internal battery.
LCD Auto Off	Set the LCD display off timer. Always On to keep the LCD display on.
Beep Sound	Enable or disable this feature to sound a tone or go mute when you press the keys.
Storage Information	Indicates the capacity of the inserted micro SD card.
Format	Use this option to format the SD card. (All files will be permanently erased.)
Default Setting	Resets the device to factory settings. Note that restoring defaults will not erase data on the SD card.
Version	Display the device firmware version.

## Photo Mode

- When the device is not recording, press and hold the MODE button in Record mode to switch to the photo mode, the photo icon will display on the top left corner of the screen.
- Now, press the OK button to take a photo.
- Press the UP button to zoom in.
- Press the DOWN button to zoom out.

In the Photo mode, press MENU to open the Photo Menu Settings. Press MENU again to open the General Settings Menu. Press MENU once again to exit the Menu settings. The UP/DOWN keys can be used to scan through the options, under each menu setting. Press OK to select the required option.

## Photo Menu Settings

<i>In the Photo mode, press MENU to open the Photo Menu. </i>	
<b>Item</b>	<b>Description</b>
Photo Resolution	Set the image resolution. The options available are 12M, 10M, 8M, 5M and 3M.
Image Quality	Choose between the options - Fine, Normal, Commonly to define the quality of the images.
Stamp	Opt to have the date or date & time displayed on the images.

## Playback Mode

Press and hold the MODE button in photo mode to switch to the playback mode. The device stores video and photos on the SD Card. Playback mode will allow you to review the saved videos and photos and play back the video with sound.

When in the Playback mode, toggle the files by Press the UP and DOWN keys to scan through the various video/image files and press OK button to play a video file.

During video playback pressing the UP or DOWN keys will fast rewind or fast forward the current video. Press OK button to pause or resume the video.

If you wish to delete or protect the file or start a slide show, press the MENU button to access these options.

Select this option to play back or repeat one or all of the recorded videos

## Playback Menu Settings

Setting	Description
<b>Delete</b>	The following options are displayed on the screen - Delete Current, Delete All. Choose the option, based on whether you want to delete the current file or all the files (both recordings and images) on the SD card.
<b>Protect</b>	The following options are displayed on the screen - Lock Current, Unlock Current, Lock All, Unlock All. Choose the option, based on whether you want to lock/unlock the files on the SD card, and then press OK.
<b>Slide Show</b>	Select the time to start a slide show of the photos and the thumbnails of the video files.



### NOTE

To return to Record Mode, press and hold the MODE button. Press OK to start recording.

## Connecting to a PC

The iGO CAM 80 can be connected to a PC (plug the USB data cable into the mini USB port). When the device is connected to a PC, select Mass Storage.

You can view the SD card contents on the PC. When the device is detected on the PC as an external drive, all snapshots can be found in the Photo folder. The video files can be found in Video folder. All the emergency recording files are stored in SOS folder that can be located in Video folder.

## Uniden Player

Uniden Player allows you to view the recordings on the iGO CAM 80 and trace them on a map. The software is supported on Windows 7, Windows 8 and Windows 10.

### Installing Uniden Player

Download the Uniden Player from the Uniden website. You may need to unzip the file using the appropriate archiving software before you can use the player. Double click on the Uniden Player icon.

### Access the Recorded Files

Before playing the recorded files on the Uniden Player, ensure that you can access the files easily.

Either remove the micro SD card from the recorder, and access the card (files) on the computer via a card reader.

or

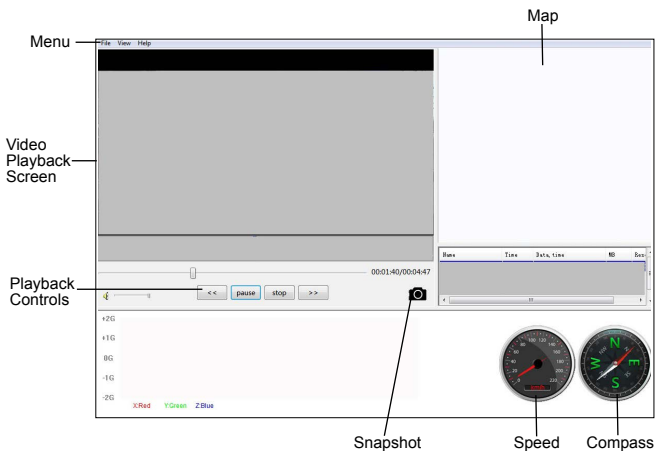
Connect one end of the USB cable to the recorder and the other end to the USB port on your computer.



## View the Recorded Files

To view the recorded files on the Uniden Player, follow the steps below:

1. Start the Uniden Player (i.e., double click on the Uniden Player icon on your desktop, or click windows start and search from the program listing).



Ensure that the PC is connected to the internet to view the map screen.

2. Click on the option File and select Open to open the files on to the Uniden Player.
3. Click on the PLAY button (Playback Controls) to start playback.

Click on the 'Snap Shot' icon to take photos of the recording. These photos will automatically save into a folder named 'screenshot'. This folder is located in the GPS Player folder stored in your PC.



**NOTE**

GPS Player version is subject to change without notice. See Uniden website to download the latest GPS Player.

## Using the App

Uniden iGO App allows you to control the iGo Cam 80 via WiFi. You can easily preview, browsing files, playback and transfer the files in the SD card into your mobile phone. The app also allows you change some of the device setting.

The iGo Cam 80 WiFi hotspot is off by default and you will need to turn it on to allow your mobile phone to connect to it.



**NOTE**

Connect your mobile phone to your iGo Cam 80 within a range of 10m.



**NOTE**

When the iGo Cam 80 WiFi is turned on, there is no way to access the device menu settings. You will need to turn off the WiFi by pressing and holding the EMERGENCY button.

1. Search and download the Uniden iGO App from the App Store for iOS devices or Play Store for Android devices.
2. Turn on the WiFi hotspot of the iGo Cam 80. The SSID and the SSID and password will be displayed on the screen.
3. Go to your mobile phone WiFi setting and connect to the iGo Cam 80 hotspot. The SSID usually starts with GS63.... and the default password is 12345678.

There are 4 tabs at the bottom of the app screen which consists of Video, Photo, Folder and Settings.

### Video

While the device is recording, you need to stop the recording in the app to access other tabs.

While the device is recording, you can take a quick snapshot or turn on/off audio recording.

If a rear camera is connected, you can switch camera views.

### Photo

Tap the Photo icon to enter Photo Mode. You can change the photo resolution and take a snapshot.

### Folder

Tap the Folder icon to enter Playback Mode. You can tap to the video file

to play directly or download the video file to the mobile phone storage. The locked file has a locked icon on the video thumbnail. You can filter the video files and the photo by tapping the Video tab or Photo tab. You can also view and share the downloaded files by tapping the phone/folder icon at the top right corner. Tap back at the top right corner to return to Video tab.

## Settings

Tap Settings icon to if you wish to access the Camera Settings and modify some of the parameters.



**NOTE**

You can change Wi-Fi SSID and password in the Camera Settings using the app.

## Rear Camera (Optional)

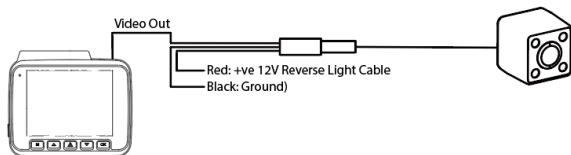
Rear camera is sold separately and you can visit our website or contact customer service for more information.

When the rear camera is connected to the Dash Cam and it is currently powered on, the rear camera will be displayed in the top left corner of the LCD screen. The recording resolution will switch to 1080P for the front camera and 480P for rear camera

## Reverse Camera (Optional)

The rear camera also works as a reverse camera when you connect it to the reverse light power connector. After you set it up, when you put your vehicle in reverse, the reverse camera will be displayed on the Dash Cam with reversing lines.

To setup the rear camera, please follow the diagram below.



**NOTE**

It is recommended to get vehicle electrician to hard wire the cable to the Reverse Light Power to use it as a reverse camera.

# Troubleshooting

Listed below are some of the problems and the possible solutions.

General Problems	Possible Solutions
The device cannot take photos or record videos	<ul style="list-style-type: none"><li>• Ensure that the SD card is formatted properly and inserted correctly.</li><li>• Use the recommended type of SD card (minimum 8GB Class 10)</li></ul>
The device automatically stops when recording	
Video is unclear	Ensure that there are no fingerprints or dirt on the lens. Ensure that the lens is always kept clean.
Dark images while recording water/sky	Adjust the exposure setting.
Colour of the images is not good	Set the 'white balance' setting to automatic.
Cross-stripe interference in an image	This is due to the light frequency. Change the light frequency depending on the light source.
The device crashes/ freezes	Press the 'Reset' button, with a pin, to restart the device.
SD Card Error	Please format the SD card and use recommended card only. Please make sure the SD card is recommended dash cam use.
Display turns off after a few minutes	Please check the LCD Auto Off setting and select Always On.
Memory card is full	Please allow loop recording to overwrite older recording files or delete unwanted files including emergency recordings.
Camera feels warm during operation	It is normal for the camera to get warm during operation. Please bear in mind that the if the camera is exposed to high temperature for a long period of time, it might fail to boot up. Cool it down and try again.
The recorded video doesn't show mapping information on the Uniden Player.	Please ensure the PC is connected to internet.

If you still need help, visit our website or call our customer service.

# Specification

Screen Size	2.4" LCD
Sensor Type	1/2.7" CMOS
Video Resolution	2880x2160/1920x1080/1280x720/ 1920x1080 + 640x480 (Dual Recording)
Photo Resolution	12M/10M/8M/5M/3M
Loop Recording	Yes
Audio Recording	Yes
Viewing Angle	150°
WDR	Yes
GPS	Built-In
Date and Time Stamp	Yes
Motion Detection	Yes
Park Mode	Yes
G-Sensor	Yes
Video Format	MP4
Video Codec	H264
Audio Codec	AAC
WiFi	Yes (up to 10m line of sight)
Storage	microSD (up to 64GB), Class 10 and above
Power Input	5V 1.5A
Battery Capacity	Li-ion 250mAh
Operating Temperature	0°C ~ 60°C
Storage Temperature	-10°C ~ 70°C
Working Humidity	10 ~ 80%

# Warranty

---

## UNIDEN iGO CAM 80

### **IMPORTANT: Satisfactory evidence of the original purchase is required for warranty service**

Please refer to our Uniden website for any details or warranty durations offered in addition to those contained below.

**Warrantor:** The warrantor is Uniden Australia Pty Limited ABN 58 001 865 498 (“Uniden Aust”).

**Terms of Warranty:** Uniden Aust warrants to the original retail purchaser only that the iGO CAM 80 (“the Product”), will be free from defects in materials and craftsmanship for the duration of the warranty period, subject to the limitations and exclusions set out below.

**Warranty period:** This warranty to the original retail purchaser is only valid in the original country of purchase for a Product first purchased either in Australia or New Zealand and will expire one (1) year from the date of the original retail sale.

If a warranty claim is made, this warranty will not apply if the Product is found by Uniden to be:

- (A) Damaged or not maintained in a reasonable manner or as recommended in the relevant Uniden Owner’s Manual;
- (B) Modified, altered or used as part of any conversion kits, subassemblies or any configurations not sold by Uniden Aust;
- (C) Improperly installed contrary to instructions contained in the relevant Owner’s Manual
- (D) Repaired by someone other than an authorized Uniden Repair Agent in relation to a defect or malfunction covered by this warranty; or
- (E) Used in conjunction with any equipment, parts or a system not manufactured by Uniden.

**Parts Covered:** This warranty covers the Product and included accessories.

**User-generated Data:** This warranty does not cover any claimed loss of or damage to user-generated data (including but without limitation phone numbers, addresses and images) that may be stored on your Product.

**Statement of Remedy:** If the Product is found not to conform to this warranty as stated above, the Warrantor, at its discretion, will either repair the defect or replace the Product without any charge for parts or service. This warranty does not include any reimbursement or payment of any consequential damages claimed to arise from a Product's failure to comply with the warranty.

Our goods come with guarantees that cannot be excluded under the Australian Consumer Law. You are entitled to a replacement or refund for a major failure and for compensation for any other reasonably foreseeable loss or damage. You are also entitled to have the goods repaired or replaced if the goods fail to be of acceptable quality and the failure does not amount to a major failure.

This warranty is in addition to and sits alongside your rights under either the COMPETITION AND CONSUMER ACT 2010 (Australia) or the CONSUMER GUARANTEES ACT (New Zealand) as the case may be, none of which can be excluded.

**Procedure for obtaining warranty service:** Depending on the country in which the Product was first purchased, if you believe that your Product does not conform with this warranty, you should deliver the Product, together with satisfactory evidence of your original purchase (such as a legible copy of the sales docket) to Uniden. Please refer to the Uniden website for address details. You should contact Uniden regarding any compensation that may be payable for your expenses incurred in making a warranty claim. Prior to delivery, we recommend that you make a backup copy of any phone numbers, images or other data stored on your Product, in case it is lost or damaged during warranty service.

#### **UNIDEN AUSTRALIA PTY LTD**

Phone: 1300 366 895

Email: [custservice@uniden.com.au](mailto:custservice@uniden.com.au)

**Uniden<sup>®</sup>**

© 2018 Uniden Australia Pty Limited.  
Printed in China